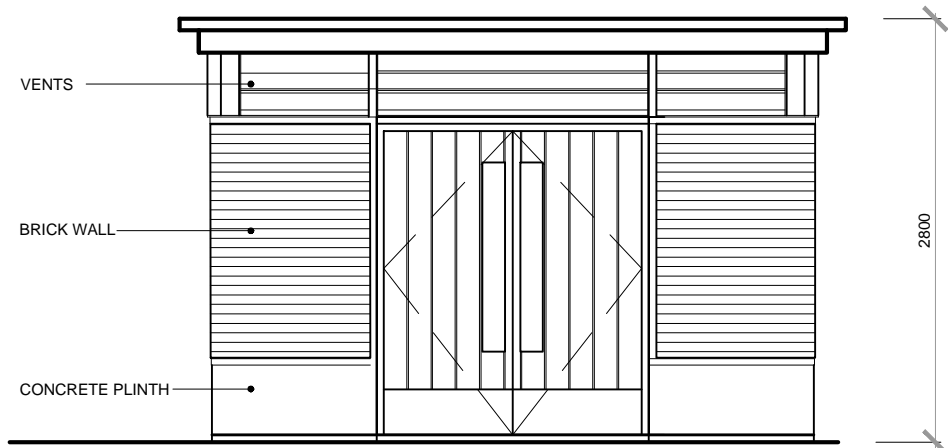
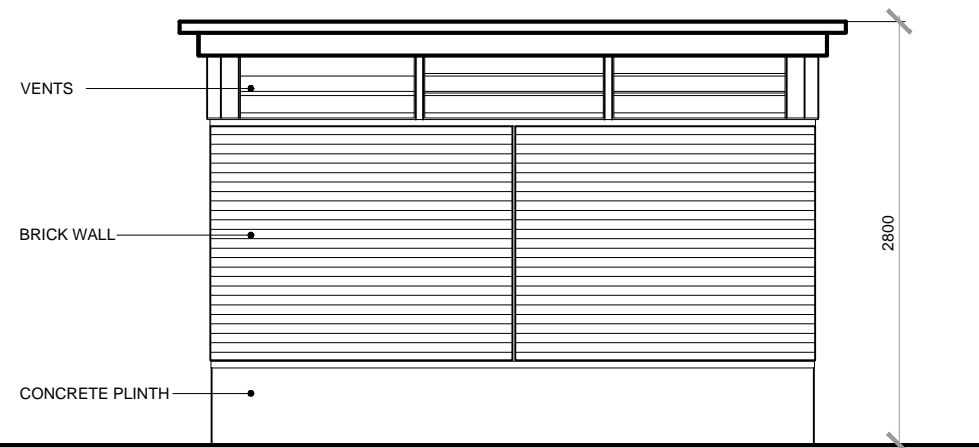


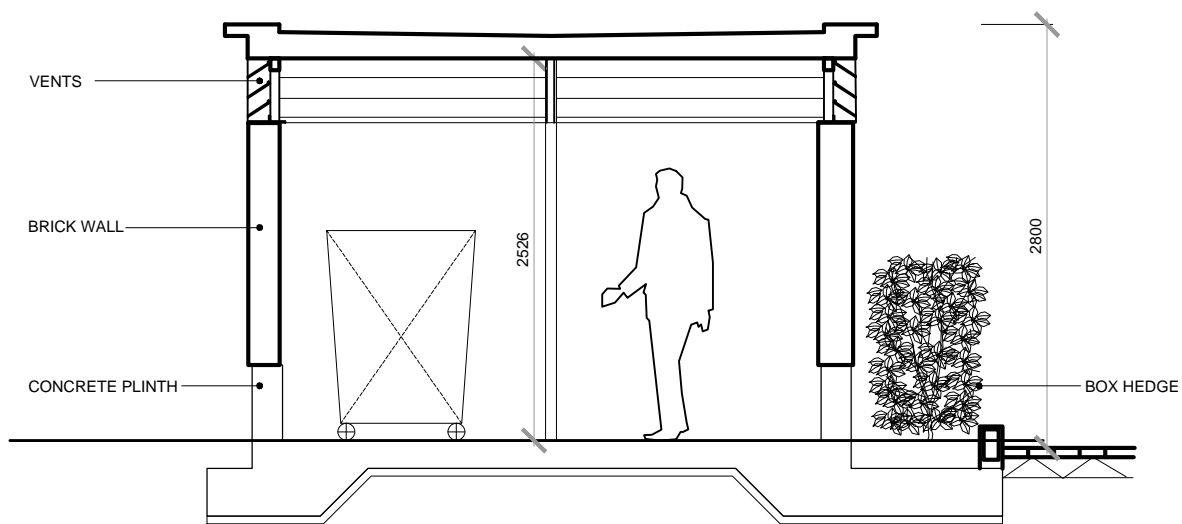
SIDE ELEVATION



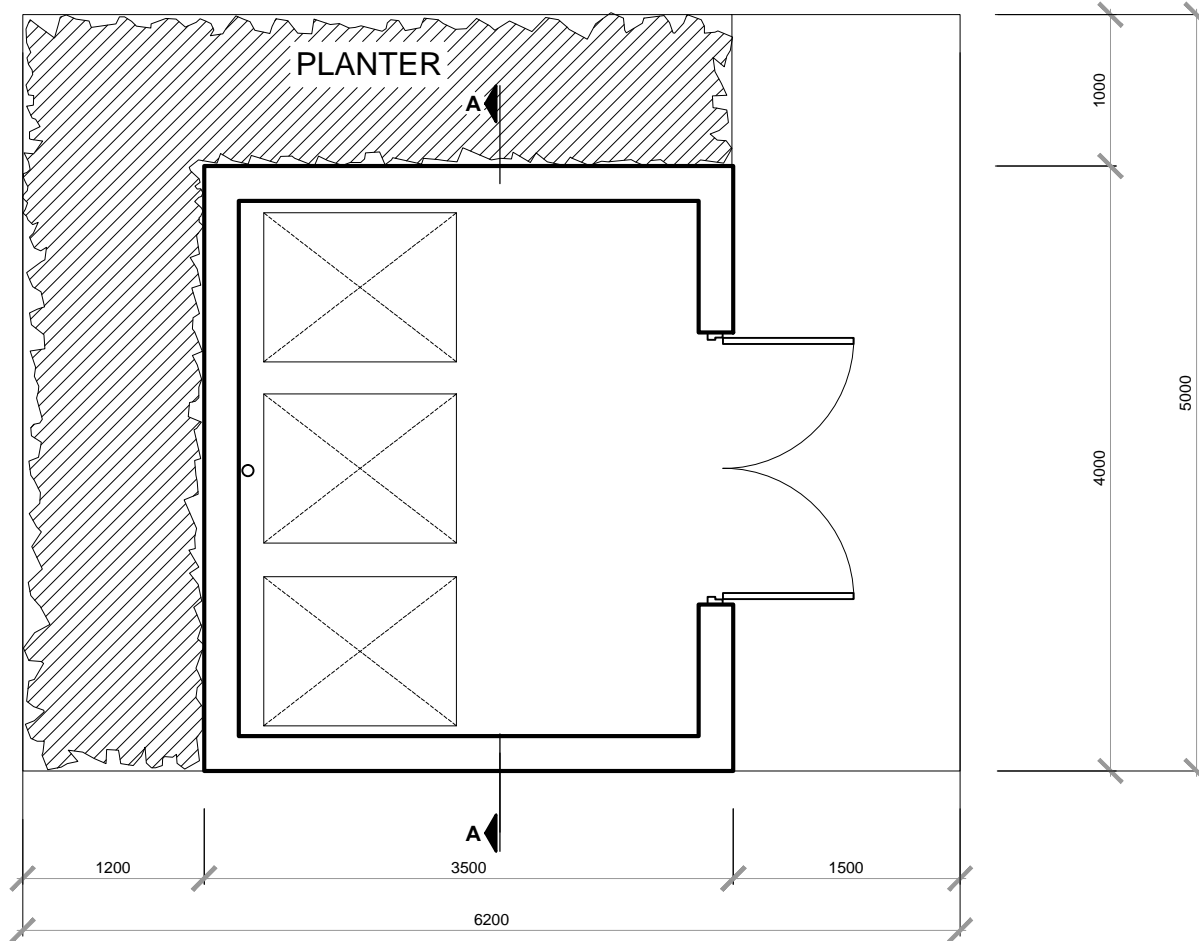
FRONT ELEVATION



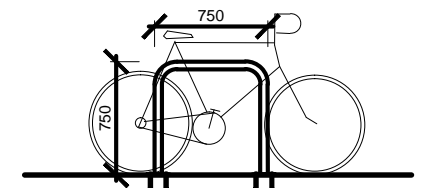
REAR ELEVATION



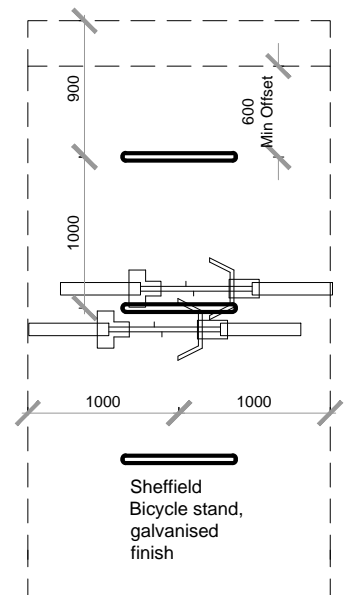
SECTION A-A



FLOOR PLAN



FRONT ELEVATION



PLAN

Bin Store

Bike Rack

GENERAL NOTES

THIS DRAWING TO BE READ IN CONJUNCTION WITH ARCHITECT'S DRAWINGS, CONSULTANT ENGINEER'S DRAWINGS AND SPECIFICATIONS & LANDSCAPE ARCHITECTS DRAWINGS

REFER TO ARCHITECT'S SITE PLAN PL002 and PL003 FOR NORTH ORIENTATION.

LEVELS GIVEN ON HOUSE TYPE DRAWINGS ARE GIVEN TO A LOCAL ABSOLUTE ZERO LEVEL. FOR SPECIFIC LEVELS DEPENDING ON INDIVIDUAL UNIT LOCATION, REFER TO ARCHITECT'S CONTEXT SECTIONS AND ENGINEER'S DRAWINGS WHERE LEVELS ARE ALL GIVEN IN RELATION TO LAND SURVEYOR'S BENCHMARK BASED ON MALIN HEAD DATUM LEVEL.

NOTES ON FINISHES:

OUTLINE SPECIFICATION:

BRICK WALLS TO SELECTED COLOUR TO BIN STORE WALLS WITH GALVANISED STEEL OPEN MESH ABOVE AND SINGLE PLY MEMBRANE ROOFING WITH PRESSED METAL FLASHING, FASCIA AND SOFFITS. LOUVRED TIMBER / ALUMINIUM DOORS TO BINS STORE. PAINTED STEEL POSTS TO SUPPORT ROOF OVER STORE.

NOTE:

DO NOT SCALE FROM DRAWINGS. WORK TO FIGURED DIMENSIONS ONLY. ARCHITECT TO BE NOTIFIED OF ALL DISCREPANCIES.

 MCCROSSAN O'ROURKE MANNING ARCHITECTS	PROJECT TITLE:	Dunshaughlin East SHD	DATE:	Dec'18	DRAWN BY:	DB
	DRAWING TITLE:	Proposed Bin Store Bike Racks, Plans, Elevations & Section	SCALE:	1:50 @ A3	REVISION:	
	Albert Place West, Harcourt Lane, Dublin 2, Ireland. Tel: 01-4788700 Fax: 01-4788711 E-Mail: arch@mccorm.com		JOB NO.:	16028.1	DRAWING NO.:	SHD015